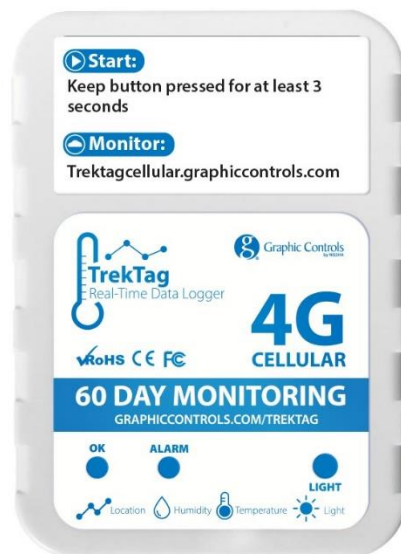


TrekTag 4G Cellular Start Up Guide



Getting to know TrekTag 4G Cellular.

1. Product overview

TrekTag 4G Cellular single use temperature and humidity data logger is designed for the cold chain. Using high-quality sensitive elements, high measurement accuracy, embedded 4G modules, the measured data is sent to the background system by way of the 4G network for monitoring and analysis, and has the functions of alarm, light, positioning, and USB automatic generating PDF reports. TrekTag 4G Cellular uses a low-power work mode. It is awakened only when sending data and operation and is otherwise it is in sleep mode at other times. The long standby time can bring greater convenience. It is suitable for monitoring of transportation processes such as food, medicine, chemical products, can be used for real-time monitoring, and can also be used for data storage and extraction. It is widely used in all aspects of cold chain logistics, such as refrigerated containers, refrigerated trucks, refrigerated delivery boxes, etc.

2. Specifications

Item	Details
Dimension	90mm*64mm*27mm
N.W	128g
Built-in battery	3.7V/3000mAh Lithium battery
GSM antenna	Built-in
Transmission mode	CAT1/GSM
Data storage capacity	Can store 20000 measurement data
Transmit interval	15mins
Temperature accuracy	±0.3℃
Humidity accuracy	±3%
Working temperature range	-20℃~ +60℃
Working humidity range	0~85%
Power Consumption	Active mode (avg.) < 100mA Sleep mode (avg.) < 50uA
Band	LTE CAT1: LTE-FDD B1、 B2、 B3、 B4、 B5、 B7、 B8、 B20、 B28、 B66 GSM: 850/900/1800 /1900MHZ
Indicator	OK/Alarm
Usage type	Single use
Usage time	60 days (15mins interval)

3. Product Features



Item	Functions
OK LED	Device status indicator (Green)
Alarm LED	Alarm light (Red)
Light sense	Detecting bright and dark changes
Button	Power on/Check Device Status
USB port	Connect to the computer to automatically generate PDF report

Now that you know more about your TrekTag 4G Cellular unit, it is important to let you know there are 2 different ways to use the logger. The first, more simple way is to simply turn on the logger per the following steps. The logger will take readings every 15 minutes per its default setting and will monitor temperature and humidity at face value readings. Alarm readings would be extreme values. The unit will then be connected by way of USB cable to a computer where a PDF file is automatically generated, providing the information gathered on the shipment. The second, more functional, way to use the logger is to create an account, register the logger unit and be able to track the progress of the shipment in real-time for location, temperature, and humidity, with PDF and Excel reports able to be run while in journey and at journey's end.

4. Operation in **BASIC MODE**

4.1 Turn on the device - Press the "Button" key for a minimum of 3 seconds. Successful start-up will have the green light staying on for 5 seconds. It means that the device has been turned on and data will be sent.



4.2 Normal Operation - After turning the device on, the device will send data according to the pre-set 15-minute interval, and "OK LED" will flash a green light every 10 seconds or press the "Button" key "OK LED" to flash the green light once and "wake up" the device.



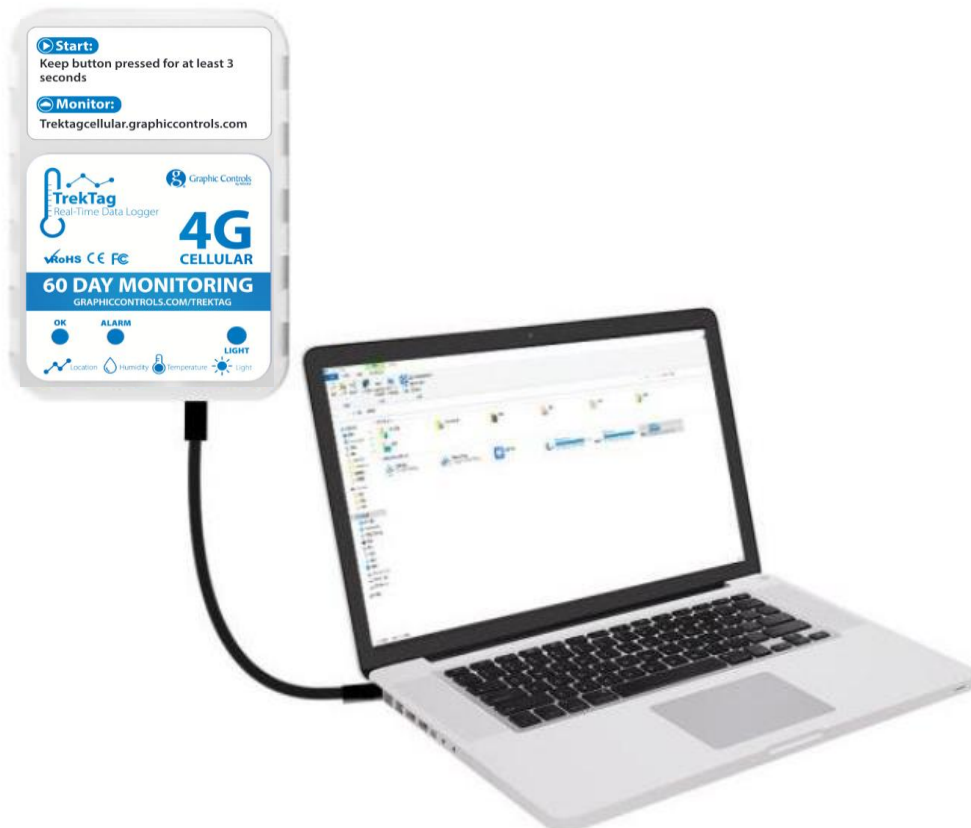
4.3 Alarm potential - After the temperature and humidity of the device collection exceed the pre-set alarm range, the device will issue an alarm. "Alarm LED" will flash its red light every 10 seconds or press the "Button" key "Alarm LED" to flash the red light once.



4.4 System Wake-Up or "Mark" - Short press the "Button" key when the device is dormant. The device is awakened and immediately sends a data.



4.5 PDF Report Download - After using a USB cable (not included) to connect the device with a computer, the computer will read the downloaded information and automatically generate a PDF report. If the real-time data of the device cannot be queried, the historical data of the device can be viewed through the PDF report.



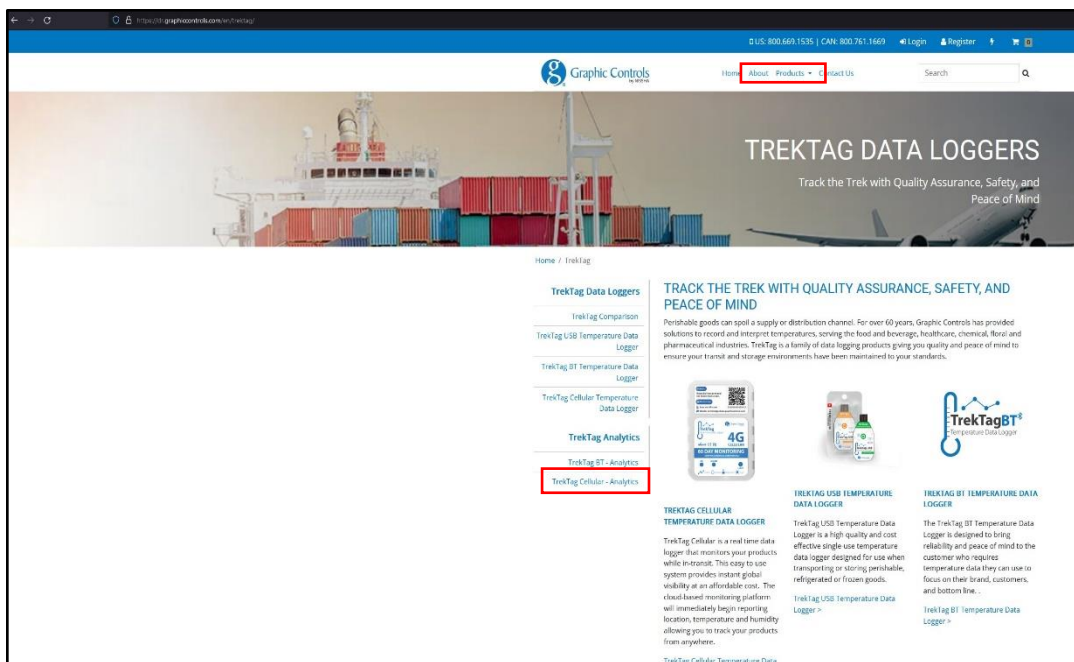
5. Operation in REAL-TIME MODE

UNLESS YOU ARE GOING TO ACTIVATE AND USE YOUR LOGGER IMMEDIATELY, DO NOT TURN ON / ACTIVATE YOUR LOGGER. Most of the set up can be done while the logger is not activated and can be done in advance of shipments.

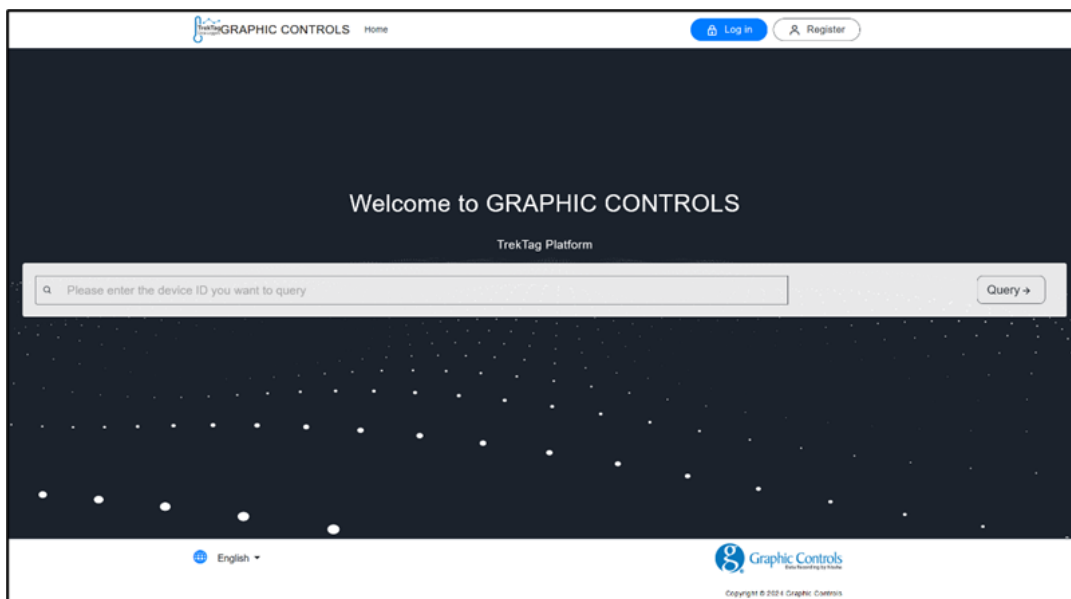
The true benefit of TrekTag 4G Cellular is the ability to see data in real-time. To see the data properly, an account needs to be set up and the logger needs to be registered through the TrekTag domain. There are 2 ways to connect to the TrekTag Cloud domain.

One – go to your browser and enter <https://trektagcellular@graphiccontrols.com>

Two – enter the domain through the Graphic Controls website, <https://www.dr.graphiccontrols.com> and going to the TrekTag Data Loggers page and locating the TrekTag Analytics link:

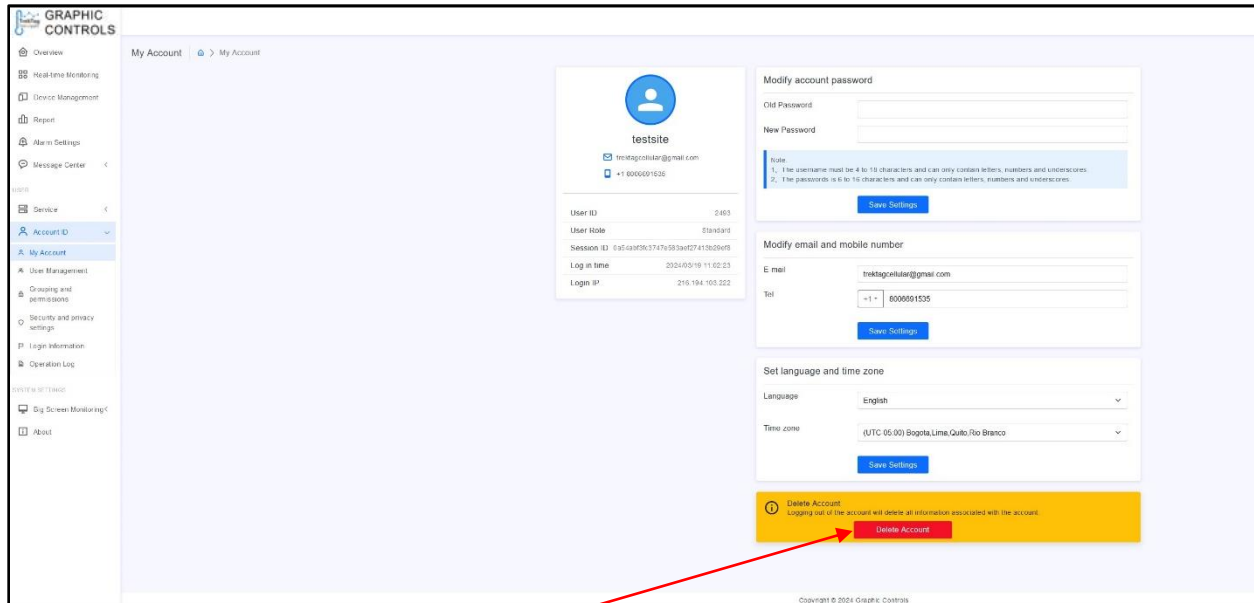


You will get to the log in screen by using either method:



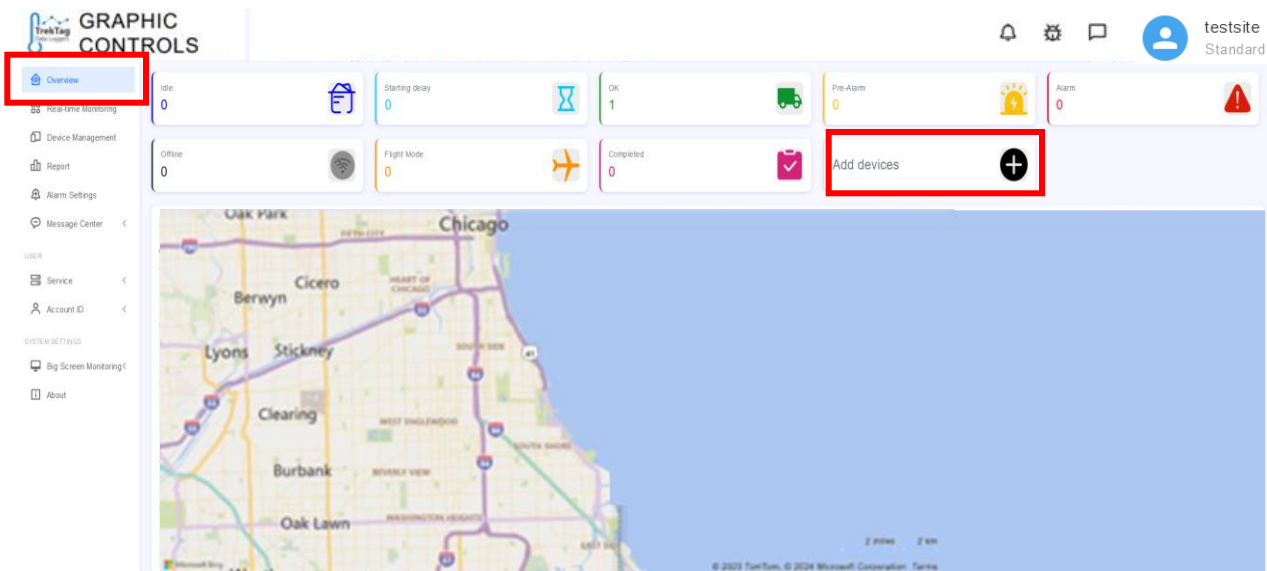
5.1 - Register or Log-In – Once at the domain home page you have to sign in to the free software portal used to provide you with your real-time data. First time users will need to register. Register with an email and password. Please be careful not to share your information with anyone you do not want to have the information. You will also be able to set up sub-accounts to allow multiple people to view the information captured. Once registered, click the “Log In” button to enter your information.

5.2 - Set up your full account information – In the account information section, you can modify the account password, email address, mobile phone number, time zone and cancel the account. Fill out as much information as possible up front, and this will save time later. Here is the screen you should be looking for:

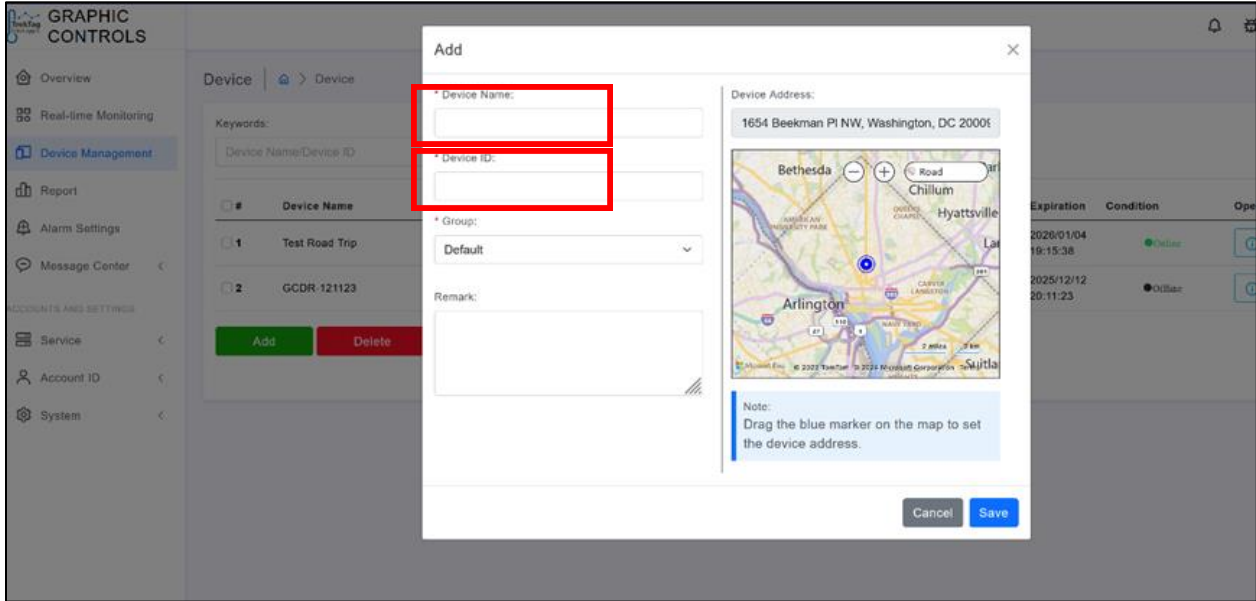


Please keep in mind that if you choose to DELETE your account, all information and saved shipment information will be lost, including any saved .PDF reports, Excel files etc. Be sure to use caution when navigating this section of the set-up process.

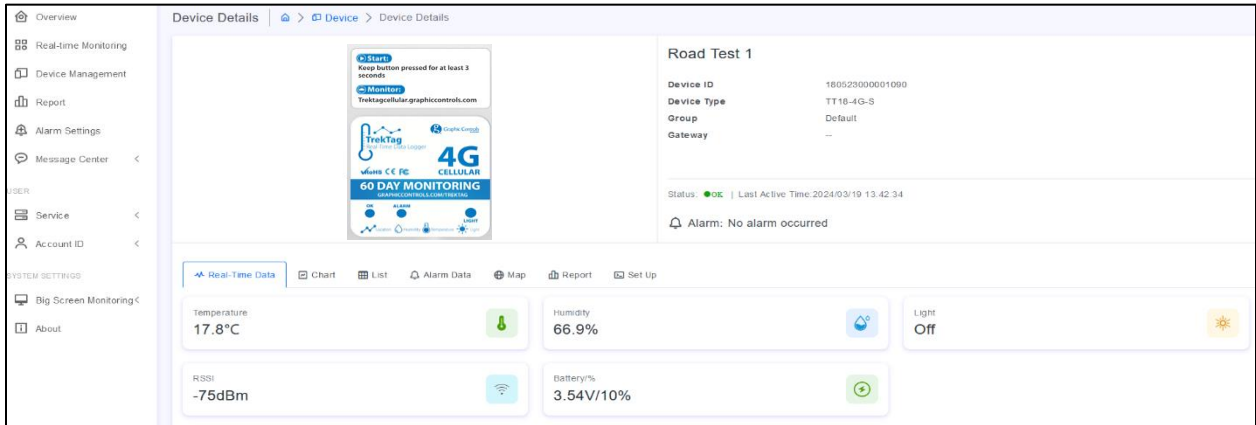
5.3 - Add your Device – You will want to navigate to the “Overview” page, with a tab located on the left side of the screen. The Overview page is a great area of the software because it shows you a variety of units (if registered) and their different statuses. You will be able to see which loggers are active, stopped, headed for an alarm, in an alarm state currently etc. From the Overview page you will ADD new loggers.



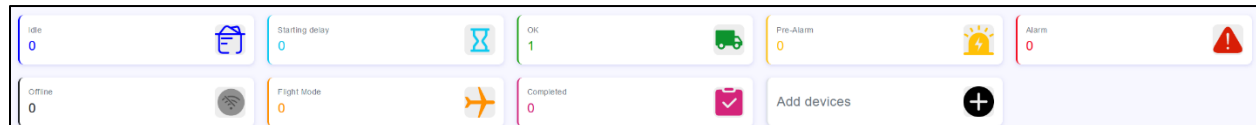
After selecting “Add Device”, you will see a window which asks you to enter a device name and device number. Device name is what you want to name the device to differentiate it from other devices in your dashboard. The device number is located on the back of the TrekTag unit and is easily recognize below the corresponding barcode. We will cover “Group” in later sections, but if you have multiple trucks, containers etc., that need to have one set of temperature and humidity ranges and a second set that will have an alternate range, you can set up a group to reflect this and assign loggers to that group, which saves on the set up time once the group is set up.



Once set up, you will see in Device Management / Device Details the logger:



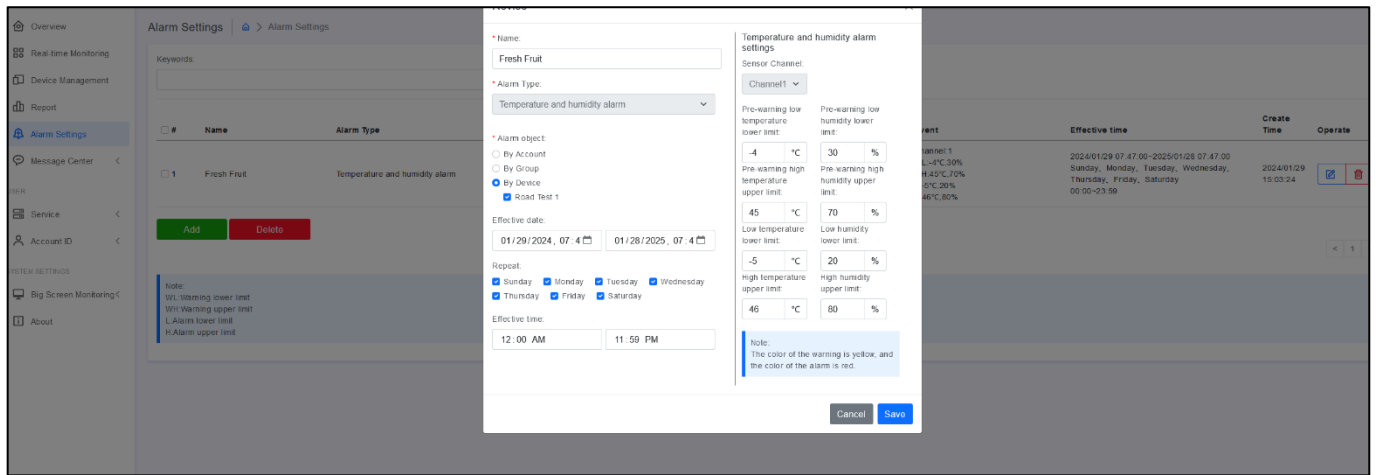
From the Overview page you will note the status icons to see “at a glance” what you have deployed:



Please note this is a demo version of the software so not too many devices are connected. Real world results / users will see a more impactful dashboard.

5.4 - Setting your temperature and humidity ranges – Now you will set your temperature and humidity ranges necessary to keep your shipment within specification and keep you at ease that your shipment will arrive as planned, or you will receive an alarm warning that things are not as intended.

From the left navigation choose the tab “Alarm Settings” to take you to the Alarm setting page. There will be a dialog box / window that pops up to allow you to name your alarm type, in this example it is Fresh Fruit. You can set the high / low for temperature and humidity and set the alarm temperature and humidity, in essence giving you the opportunity to take corrective action prior to extremes for each reading occurring. You will note here you can set a “Group” up and when setting up future loggers as described in section 5.3, you can assign to this group and the settings should automatically populate.



Name:
Fresh Fruit

Alarm Type:
Temperature and humidity alarm

Alarm object:

By Account

By Group

By Device

Road Test 1

Effective date:
01/29/2024, 07:4 01/28/2025, 07:4

Repeat:

Sunday Monday Tuesday Wednesday

Thursday Friday Saturday

Effective time:
12:00 AM 11:59 PM

Temperature and humidity alarm settings

Sensor Channel: Channel1

Pre-warning low temperature lower limit: -4 °C

Pre-warning low humidity lower limit: 30 %

Pre-warning high temperature upper limit: 45 °C

Pre-warning high humidity upper limit: 70 %

Low temperature lower limit: -5 °C

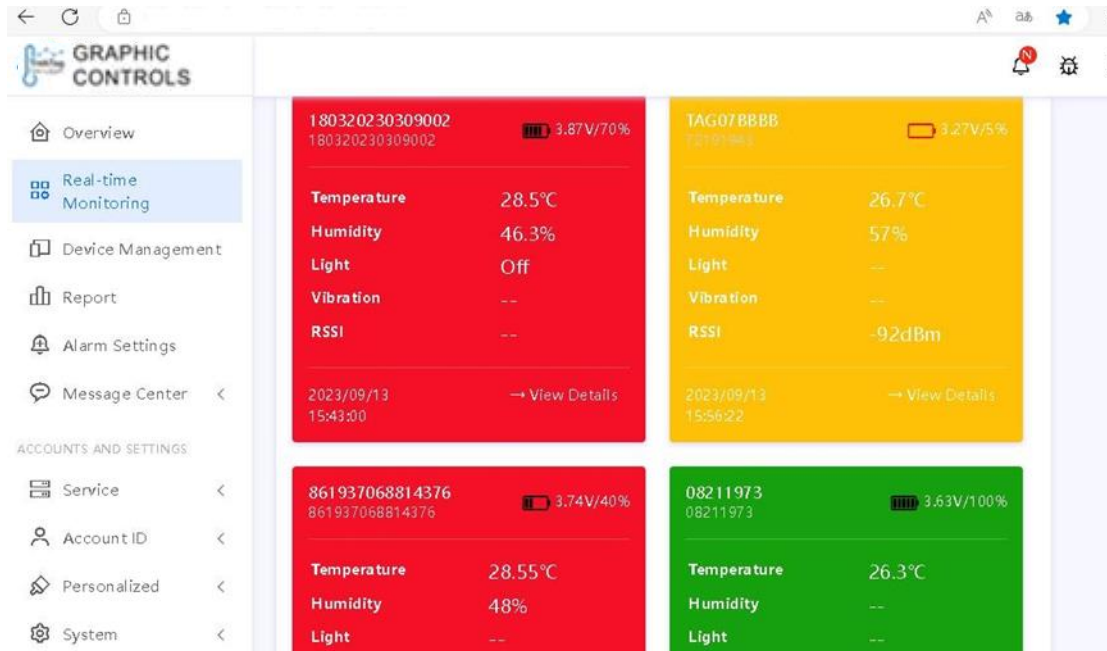
Low humidity lower limit: 20 %

High temperature upper limit: 46 °C

High humidity upper limit: 80 %

Note:
The color of the warning is yellow, and the color of the alarm is red.

Once the devices are deployed and you have your parameters set, you will be able to navigate to the left and find the “Real-Time Monitoring Tab” to see your dashboard of units. The color coding makes it easy for you to see if you have a good set of shipments or if there are issues that need to be addressed. Here is an example of a set of deployed loggers in action:

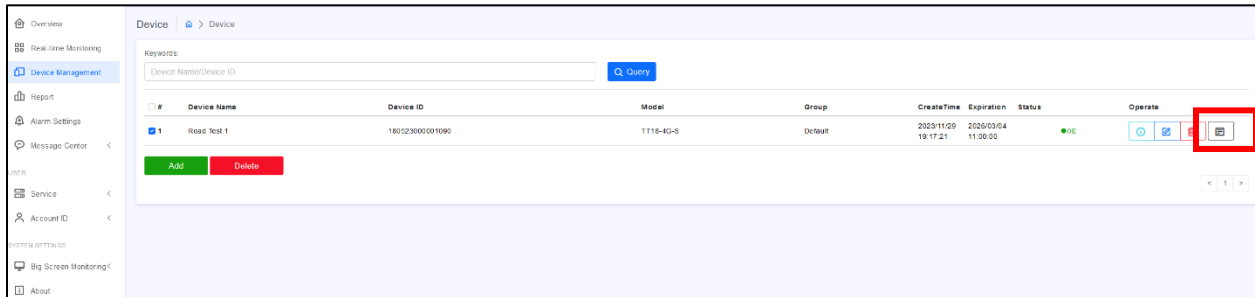


The alarm scheme supports multiple groups of alarms. When an alarm occurs on the same device, the system will select the alarm scheme with the largest condition range.

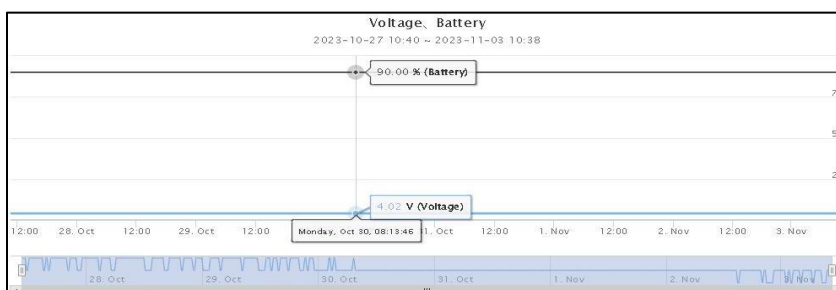
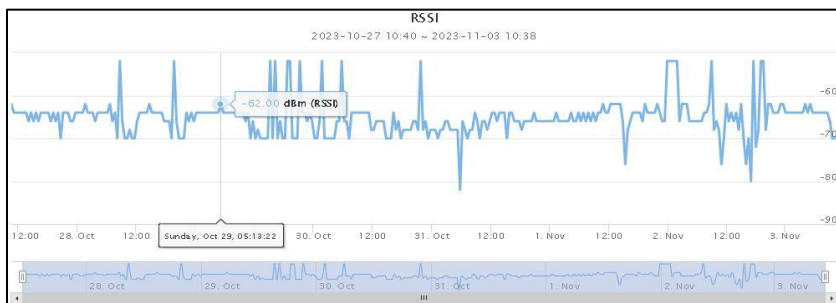
Color description: A. Gray = offline; B. Green= normal; C. Red = alarm; D. Yellow = forewarning of alarm

Report Generation

6.1 - Real-time reporting – By selecting to the “Device Management” tab on the left side of the site, you will be brought to the list of devices you have logged in to the portal. To look at a specific logger, select it from the list and click the black icon at the far right to open up the reports:



After selecting the logger, you will have access to different presentations of the information over the course of the logger’s journey, including a set of charts for temperature, humidity, Cell strength (RSSI) and battery life remaining:



The temperature and humidity information is also available in list form by moving to the next tab:

#	Temperature	Humidity	Light	Vibration	Time
1	27.7°C	67.7%	Off	--mg	2023/09/06 16:02:55
2	27.7°C	67.8%	Off	--mg	2023/09/06 16:17:55
3	27.7°C	67.8%	Off	--mg	2023/09/06 16:32:55
4	27.8°C	67.8%	Off	--mg	2023/09/06 16:47:55
5	27.8°C	67.9%	Off	--mg	2023/09/06 17:02:55
6	27.8°C	68%	Off	--mg	2023/09/06 17:17:55
7	27.8°C	68.1%	Off	--mg	2023/09/06 17:32:55
8	27.9°C	68.3%	Off	--mg	2023/09/06 17:47:55

Alarm history:

#	Name	Alarm Type	Object	Event	Effective time	Create Time	Operate
1	System	Offline alarm	System	Offline alarm value:120min	1970/01/01 00:00:00~2098/12/31 16:00:00 Sunday, Monday, Tuesday, Wednesday, Thursday, Friday, Saturday 00:00~23:59	2023/09/13 07:57:30	

Current location / history:

GRAPHIC CONTROLS

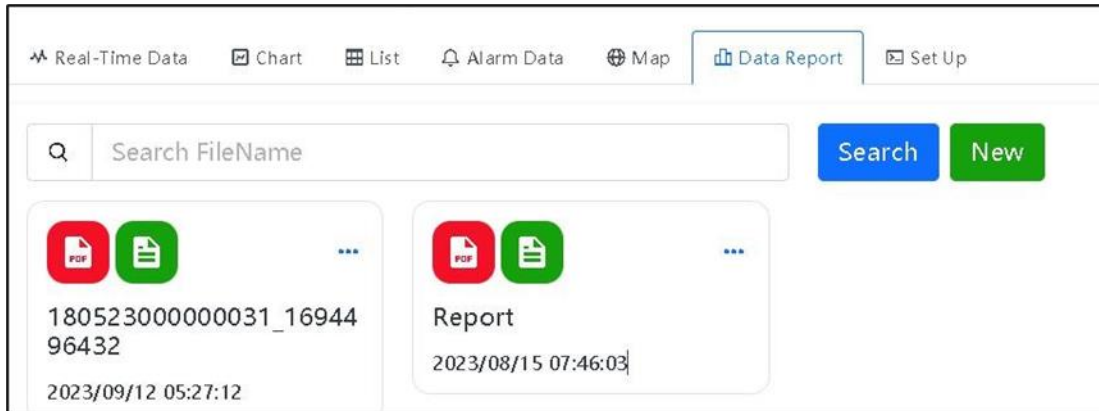
Map

Time Span: 01/17/2024, 08:21 AM - 01/24/2024, 08:21 AM

Location Information

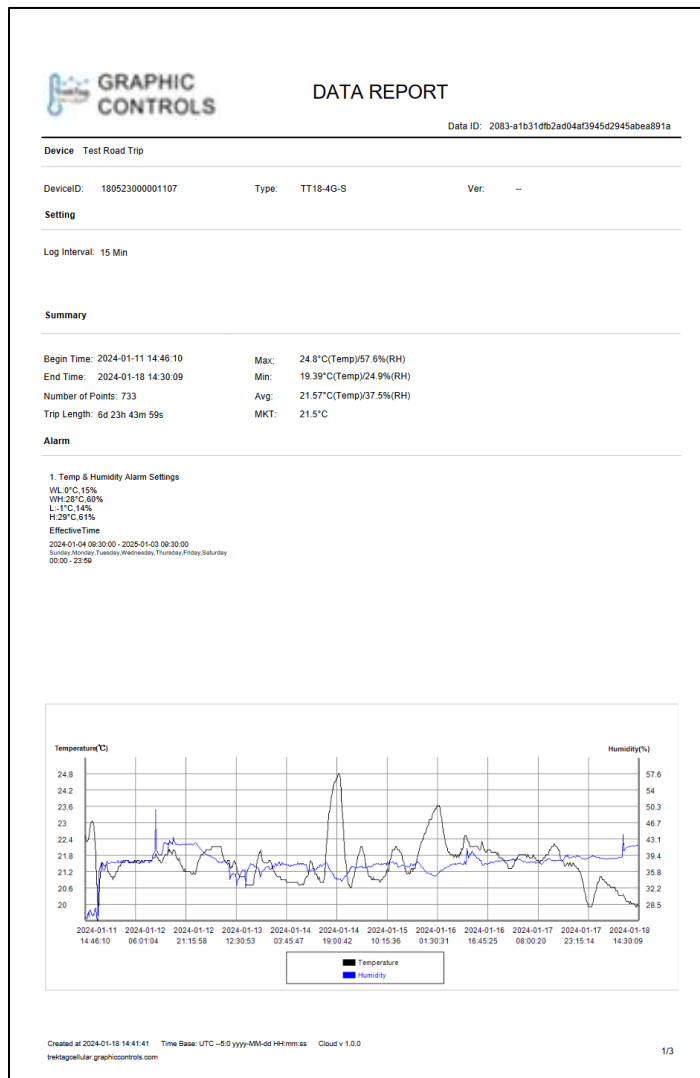
- 2024/01/17 08:31:10
41.4830172,-88.2263275
- 2024/01/18 06:30:09
41.4830172,-88.2263275
- 2024/01/18 07:00:09
41.4977659,-88.2101000

6.2 - Data report downloads – Reports can be downloaded to PDF and / or Excel for record keeping and for use when shipments have damage or spoilage. Some sample outputs:



The PDF report format is as follows:

Summary page is the cover page and then the subsequent pages are the data that was captured at each interval, as set by you, the user:



Data page example:

GRAPHIC CONTROLS DATA REPORT. Data ID: 2083-a1b310fb2ad04af3945d2945abe891a. Table with columns: DataTime, Temp(C)/RH(%), and multiple columns of data points.

Excel format is slightly different presentation of the information:

Summary Sheet:

Summary Sheet: Table with columns A, B, C. Contains fields like Data ID, Time Base, Information (Device, Setting, Logging, Summary, Extra), and File details (App, Create at).

Data Sheet:

Data Sheet: Table with columns A, B, C, D. Contains columns: #, DateTime, Temperature °C, Humidity %.

Lastly, you can adjust the interval for readings in the “Set Up” tab within the Device Management page. Keep in mind the default is readings every 15 minutes, which allow for 60 days monitoring. 60 days is the known maximum number of days for monitoring. If you increase the readings interval, you will shorten the number of days of logging, i.e. 10-minute interval may shorten to 45 days of readings.

Also, if you know there will be airflight involved, the logger can be set to go into “airplane mode” so it is not looking for cell service during the flight. In this example we have allowed for 30 minutes to get to the flight and the flight duration of 4.5 hours. The unit WILL CONTINUE to take readings, they will not transmit or be visible on cloud during flight.

Real-Time Data | Chart | List | Alarm Data | Map | Report | **Set Up**

Set the device data sending interval

Data transmission interval: 15 Minute ▶ Send

Set Airplane Mode

Enable: Enter airplane mode: 30 Minute Exit airplane mode: 300 Minute ▶ Send

Custom Command

Input Command: ▶ Send

Account Settings

7.1 - Basic settings - In My account, you can modify the account password, email address, mobile phone number, time zone and cancel the account. Remember that once an account is canceled or deleted the information is not recoverable.

GRAPHIC CONTROLS

My Account

testsite
testtag@control.com
+1 8000001535

UMAR ID	2493
User Role	Standard
Session ID	f1f1c0d95b3747e583a07e1302b0f5
Log in time	2023/05/16 11:02:23
Login IP	216.194.102.222

Modify account password

Old Password:
New Password:
Note: 1. The password must be 4 to 10 characters and can only contain letters, numbers and underscores.
2. The password is 6 to 10 characters and can only contain letters, numbers and underscores.

Save Settings

Modify email and mobile number

Email: testtag@control.com
Tel: +1 8000001535

Save Settings

Set language and time zone

Language: English
Time zone: (UTC 05:00) Bogota, Lima, Quito, Rio Branco

Save Settings

Delete Account
Logging out of the account will delete all information associated with the account.

Delete Account

Copyright © 2023 Graphic Controls

7.2 Sub-accounts - Sub-accounts can be added here for easy management:

The screenshot shows the 'User Management' section of the GRAPHIC CONTROLS interface. A search bar at the top allows filtering by 'UserName/Email/Tel'. Below it is a table listing users, including sub-accounts. The table has columns for #, UserName, User Role, E-mail, Tel, Condition, Registration Time, and Operate. At the bottom of the table are 'Add' and 'Delete' buttons.

#	UserName	User Role	E-mail	Tel	Condition	Registration Time	Operate
1	test1000	Standard	353600547@qq.com	15545247	Normal	2019/11/14 10:59:18	[Refresh]
2	jim	Sub-account (query function only)	jim@rrrrrrttttt.com	0123456789	Normal	2023/06/27 19:17:18	[Refresh] [Edit] [Delete]
3	tina	Sub-account (query function only)	tina@aaa.bbb.com	12345678900000	Normal	2023/06/27 19:19:19	[Refresh] [Edit] [Delete]
4	jacky	Sub-account (query function only)	jacky@aa.bbb.com	789456123	Normal	2023/06/27 19:20:21	[Refresh] [Edit] [Delete]
5	jane20	Sub account	2013804912@qq.com	15084782472	Normal	2023/07/13 17:30:08	[Refresh] [Edit] [Delete]

7.3 - Permissions – You can add groups here to manage devices in groups, and you can also set the access function for sub-accounts in the permissions of the group:

The screenshot shows the 'Grouping and permissions' section of the GRAPHIC CONTROLS interface. It displays a table with columns for #, Group name, Sort, and Remark. Each row has 'Revise', 'Permission', and 'Delete' buttons. An 'Add' button is located below the table.

#	Group name	Sort	Remark
1	VW	1	[Revise] [Permission] [Delete]
2	mmm	1	[Revise] [Permission] [Delete]

Setting permissions

- aa
- bb
- dd
- gg

Note:
Only checked users can access the group

Cancel Save

Now you are set to use the TrekTag Cellular device. Use the device in a variety of applications and ranges to make sure valuable shipments make it to their destination according to the transit specifications.

The Graphic Controls TrekTag Team